

# RELIANT

Monitoring Services

**ASCEND** SINGLE GPS + RF SYSTEM

SUPERIOR  
LAW ENFORCEMENT  
TECHNOLOGIES

## Next generation electronic offender monitoring technology

Reliant is proud to present the most technically advanced, game-changing monitoring solution on the market, the nForce – a truly innovative one-piece electronic monitoring solution. Exceptionally reliable, easy to install and monitor – no tools required. Small, light and unobtrusive, the nForce allows enrollees to be productive members of society while still being held accountable to compliance parameters.

## Technology makes the difference

The nForce is a true one-piece device that doesn't require a home unit. Designed from the ground up to eliminate time consuming false alerts, flexible technology increases productivity and allows supervisors to easily enforce curfew compliance and monitor specific GPS location and time compliance all with a single hardware platform. All enrollees can be monitored, regardless of supervision level, with one device.

## nHome base unit and supplemental monitoring services

The optional wireless home base unit provides a more granular and added layer of supervision when situations warrant more intense presence confirmation. The nHome device can sidestep the need for traditional telephone lines and utilizes its own communication protocol. In-home supervision, provided by the latest wireless technology, provides a secure, constant link between the nHome base unit and nForce bracelet.



## Key Features

- Operational flexibility, ability to monitor all enrollees regardless of supervision level with one device
- One-piece GSM & RF device
- Excellent battery life
- No tools required for installation
- Time saving visual inspection of strap tamper
- Configurable device vibration and audible alerts
- Enrollee communication, acknowledgment button
- Configurable multi-colored LED indicators
- Multiple layers of tamper detection
- Quad-band GSM 850/900/1800/1900mhz
- Waterproof to IP68 military standard
- Size of nForce: 3.38 x 2.73 x 1.33in (86 x 69 x 36mm)
- Weight of nForce: 7.94 oz (225 g)
- Made in the USA

# RELIANT

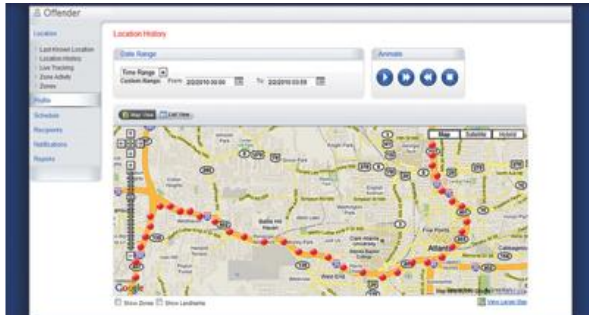
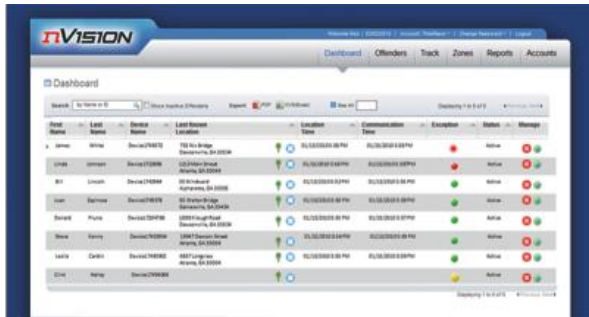
Monitoring Services

## ASCE<sup>™</sup> SINGLE GPS + RF SYSTEM

SUPERIOR  
LAW ENFORCEMENT  
TECHNOLOGIES

### Secure, scalable, Web-based application

Designed specifically with the needs of correctional officers in mind, the nVision supervision platform is an intuitive, easy-to-learn software application that lets you conveniently manage case loads and perform routine functions such as enrollment, processing alerts, displaying enrollees' current location, movement and status. Additionally, unlimited historical data can be provided to assist with criminal investigations or to verify compliance history.



### Key Benefits

- Configurable exception-alerting capabilities
- Completely Web-based with no software to install, manage or maintain
- Takes only minutes to enroll new enrollees, set schedules and curfews that keep enrollees accountable to their compliance and court orders
- Unlimited inclusion zones for curfew compliance and exclusion zones to enforce stay away or protection orders
- All enrollee information is hosted in a SAS70 Type II Compliance facility and managed by the third largest data center provider in US
- Home page conveniently provides caseload information at a glance
- Detailed exception, activity and speeding reports for use in court proceedings
- Active tracking and ability to locate on demand for both GPS and RF configurations
- Current status and location history viewable via standard, satellite and hybrid maps
- In the event of a violation or non-compliance, agency personnel assigned to the case will be notified immediately via email or text, allowing for timely response